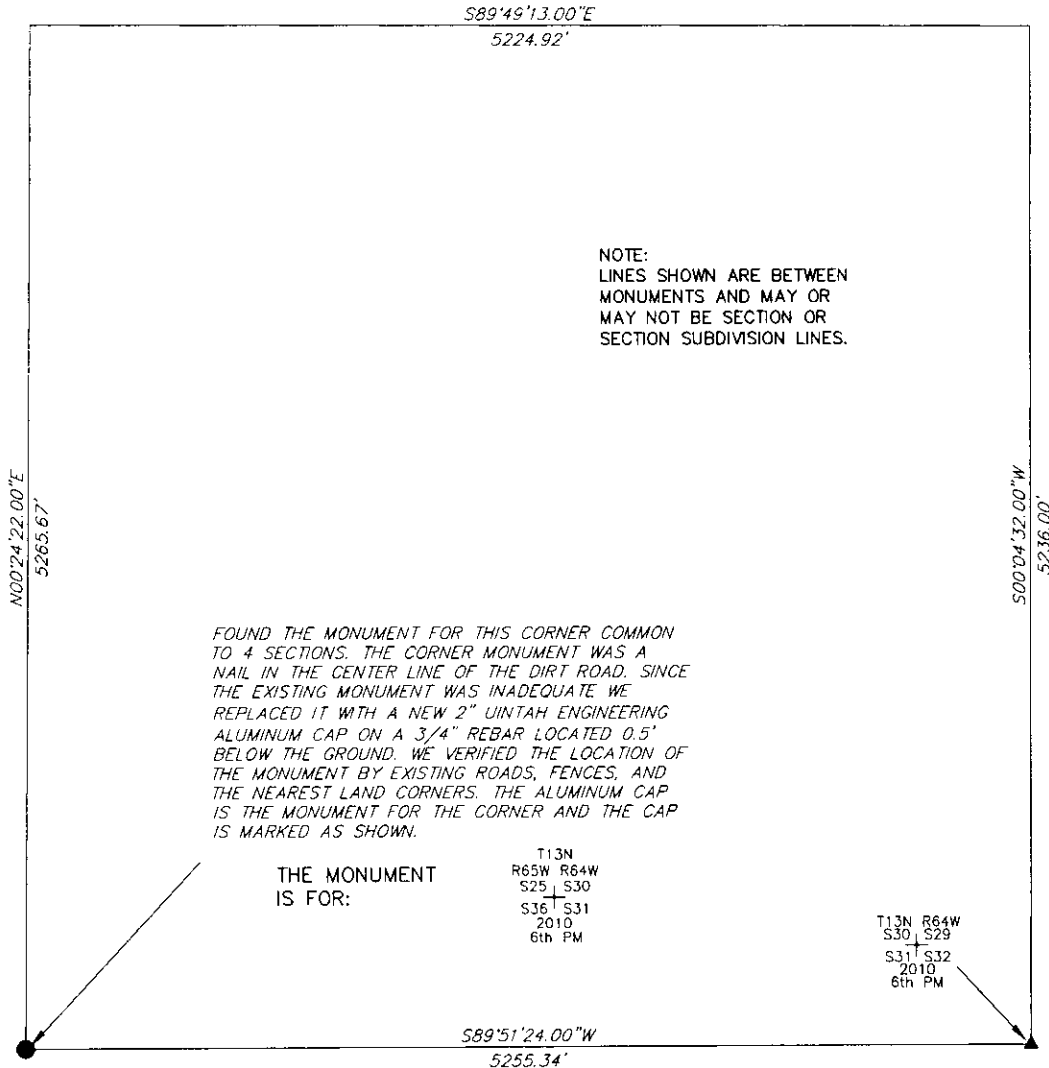


# State of Wyoming Corner Record

CORNER PERPETUATION AND FILING ACT,  
Regulations of the Board of Registration for Professional Engineers and Land Surveyors.)

Reverse side of this form may be used if more space is needed.

Record of original survey and citation of source of historic information (if corner is lost or obliterated). Description of corner monumentation evidence found and/or monument and accessories established to perpetuate the location of this corner. Sketch of relative location of monument, accessories, and reference points with course and distance to adjacent corner(s) (if determined in this survey). Method and rationale for reestablishment of lost or obliterated corner.



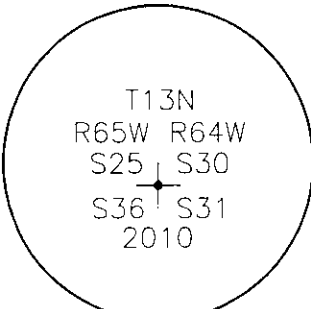
NOTE:  
LINES SHOWN ARE BETWEEN  
MONUMENTS AND MAY OR  
MAY NOT BE SECTION OR  
SECTION SUBDIVISION LINES.

FOUND THE MONUMENT FOR THIS CORNER COMMON TO 4 SECTIONS. THE CORNER MONUMENT WAS A NAIL IN THE CENTER LINE OF THE DIRT ROAD. SINCE THE EXISTING MONUMENT WAS INADEQUATE WE REPLACED IT WITH A NEW 2" UINTAH ENGINEERING ALUMINUM CAP ON A 3/4" REBAR LOCATED 0.5' BELOW THE GROUND. WE VERIFIED THE LOCATION OF THE MONUMENT BY EXISTING ROADS, FENCES, AND THE NEAREST LAND CORNERS. THE ALUMINUM CAP IS THE MONUMENT FOR THE CORNER AND THE CAP IS MARKED AS SHOWN.

THE MONUMENT IS FOR:

T13N  
R65W R64W  
S25 S30  
S36 S31  
2010  
6th PM

T13N R64W  
S30 S29  
S31 S32  
2010  
6th PM



THE MONUMENT IS MARKED

CORNER MONUMENT SYMBOLS

- RECORD IS FOR THIS CORNER MONUMENT.
- ▲ A RELATED CORNER OR WC MONUMENT.

SCALE 1"=1000'  
(EXCEPT IN TRIVIAL CASES)  
BEARINGS ARE RELATED TO WGS 84 WITH GPS OBSERVATIONS  
DRAWN BY: AM  
P.C. L. PENCE  
COUNTY: LARAMIE

Date of Field Work: 05/05/2010 Office Reference: \_\_\_\_\_

CROSS INDEX DIAGRAM

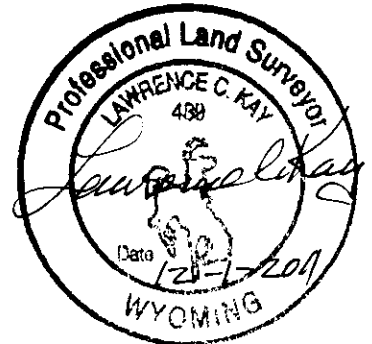
A	1	2	3	4	5	6	7	8	9	10	11	12	13	14	15	16	17	18	19	20	21	22	23	24	25	A
B																										B
C		6		5		4		3		2																C
D																										D
E																										E
F																										F
G		7		8		9		10		11		12														G
H																										H
J																										J
K																										K
L		18		17		16		15		14		13														L
M																										M
N																										N
O																										O
P		19		20		21		22		23		24														P
Q																										Q
R																										R
S																										S
T		30		29		28		27		26		25														T
U																										U
V																										V
W																										W
X		31		32		33		34		35		36														X
Y																										Y
Z																										Z

Firm/Agency, Address

UELS, LLC  
85 South 200 East  
Vernal, Utah 84078  
  
435-789-1017

This corner record was prepared by me or under my direction and supervision.

SEAL & SIGNATURE



RECORDED 12/08/2011 AT 1:18 PM REC# 581074 BK# 2249 PG# 400  
DEBRA K. LATHROP, CLERK OF LARAMIE COUNTY, WY PAGE 1 OF 1